

ATX Master Mini-Transceiver

Features

- Synchronizes to NIST cesium atomic clock via WWVB radio and transmits time to wall clocks and other AirTime family products via UHF radio signal
- Battery operated and wireless transceiver is user installable
- Battery life is 5 years (optional, maintenance-free AC adaptor)
- Low power 1mW radio transmission covers 150 foot radius
- Additional units will extend coverage beyond 150 feet
- Separate FCC licensing per installation is not required

Operation

The Master transceiver should be located near a window facing Boulder, CO. Upon initial power-up, the ATX listens for the WWVB signal for 20 minutes as indicated by the LCD display. Upon receiving the signal, the ATX displays reception strength and continuously transmits the time signal for one hour, allowing the installer to activate a reset at each clock. Upon hearing this signal, the repeater ATX units automatically synchronize and begin hourly transmissions. During normal operation, the ATX Master unit synchronizes with WWVB once per hour and upon reception transmits the AirTime signal once per hour to the wall clocks and repeater ATX devices.

Physical

LCD displays local time, battery status, signal reception strength, confirmation of WWVB reception in past 24 hours, transmission indicator, time zone, Daylight Saving mode, and user feedback during setup. Six (6) buttons provide user setup operation. Mode switch to select Master (using WWVB time source) or Repeater (retransmits the time from the Master ATX transceiver). The ATX has built in transceiver antennas and an impact resistant plastic case.



Specifications

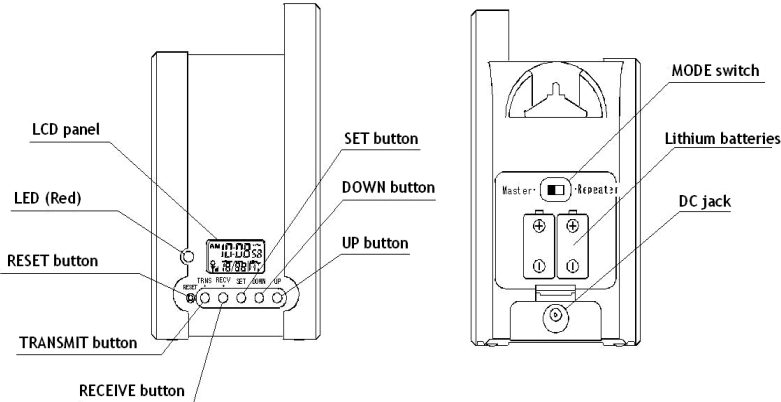
- Maximum Transmission Power 1mW
- Radio Frequency 452 MHz
- Channel Filter Band Width..... 19.2kHz
- Channels Available 10 (1x10)
- Signal Transmission Occurs Hourly
- Daylight Saving Time Option Yes
- Time Zone Options Seven (7) USA
- Batteries..... Lithium CR123A x 2 (included)
- Battery Life (approximate) 5 years
- AC Power Adaptor (optional)..... 115 VAC input / 6VDC output (P/N: VIE1800)
- Dimensions 3.8" wide x 6.5" high x 2" deep
- Weight..... 0.6 lbs
- Operating Temperature -10 ~ + 50°C
- Made in China
- FCC Part 15 Compliant

Warranty

One year limited warranty on defects in material or workmanship.

Ordering Information

Part	Description
ATX	Master Mini-Transceiver, 1Milliwatt
VIE1800	AC Power Adaptor for ATX



Lathem
 200 Selig Drive, SW
 Atlanta, Georgia 30336
 (800) 241-4990 | www.lathem.com

Copyright © 2009 Lathem Time Corporation. All rights reserved. Information believed to be accurate at time of printing, but is subject to change without notice. Lathem, AirTime, and their respective logos are registered trademarks of Lathem Time Corporation.